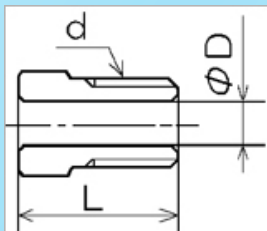
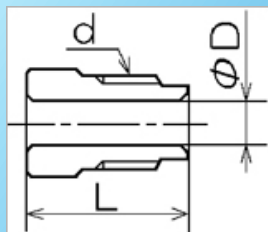


Flare Nut A フレアナットA



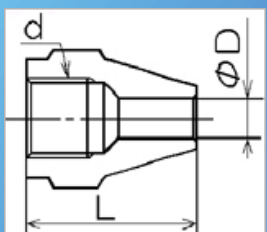
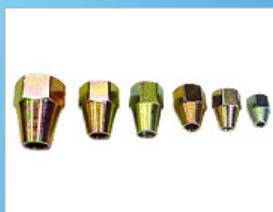
| 品番 | 管のミリ(インチ) | d | L(mm) | D(mm) |
|---------|---------------|------------|-------|-------|
| FN-0001 | 4.76mm(3/16") | M10×P1.0 | 16.0 | 4.9 |
| FN-0002 | 4.76mm(3/16") | M10×P1.25 | 16.0 | 4.9 |
| FN-0003 | 4.76mm(3/16") | M12×P1.0 | 17.0 | 4.9 |
| FN-0004 | 4.76mm(3/16") | UNF3/8×24 | 14.0 | 4.9 |
| FN-0005 | 4.76mm(3/16") | UNF7/16×24 | 15.8 | 4.9 |
| FN-0006 | 6.35mm(1/4") | M12×P1.0 | 17.0 | 6.5 |
| FN-0007 | 6.35mm(1/4") | M12×P1.5 | 20.0 | 6.5 |
| FN-0008 | 6.35mm(1/4") | UNF7/16×24 | 21.0 | 6.5 |
| FN-0009 | 8mm | M14×P1.5 | 20.5 | 8.2 |
| FN-0010 | 8mm | UNF1/2×20 | 15.5 | 8.2 |
| FN-0011 | 10mm | M16×P1.5 | 22.5 | 10.2 |

Flare Nut B フレアナットB



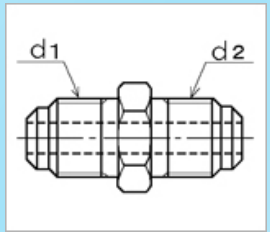
| 品番 | 管のミリ(インチ) | d | L(mm) | D(mm) |
|---------|---------------|-----------|-------|-------|
| FN-0101 | 4.76mm(3/16") | M10×P1.0 | 18.0 | 4.9 |
| FN-0102 | 4.76mm(3/16") | M10×P1.25 | 21.0 | 4.9 |
| FN-0103 | 4.76mm(3/16") | UNF3/8×24 | 20.0 | 4.9 |
| FN-0104 | 6.35mm(1/4") | M12×P1.0 | 19.0 | 6.5 |
| FN-0105 | 6.35mm(1/4") | M12×P1.5 | 24.0 | 6.5 |

Flare Nut C フレアナットC



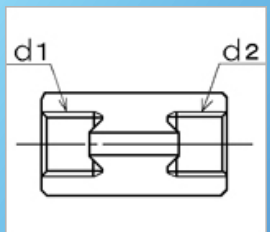
| 品番 | 管のミリ(インチ) | d | L(mm) | D(mm) |
|---------|---------------|-----------|-------|-------|
| FN-0201 | 4.76mm(3/16") | M10×P1.0 | 18.0 | 4.9 |
| FN-0202 | 4.76mm(3/16") | UNF3/8×24 | 20.5 | 4.9 |
| FN-0203 | 6mm | M14×P1.5 | 28.0 | 6.2 |
| FN-0204 | 6.35mm(1/4") | M12×P1.0 | 25.0 | 6.5 |
| FN-0205 | 6.35mm(1/4") | M12×P1.5 | 22.0 | 6.5 |
| FN-0206 | 8mm | M14×P1.5 | 28.0 | 8.2 |
| FN-0207 | 10mm | M16×P1.5 | 32.0 | 10.2 |
| FN-0208 | 12mm | M20×P1.5 | 40.0 | 12.2 |
| FN-0210 | 15mm | M22×P1.5 | 45.0 | 15.2 |

Flare Connect フレアコネクタ



| 品番 | 管のミリ(インチ) | d1 | d2 | |
|---------|---------------|-----------|-----------|--|
| CT-0301 | 4.76mm(3/16") | M10×P1.0 | M10×P1.0 | |
| CT-0302 | 4.76mm(3/16") | M10×P1.25 | M10×P1.25 | |
| CT-0303 | 6.35mm(1/4") | M12×P1.0 | M12×P1.0 | |
| CT-0304 | 6.35mm(1/4") | M12×P1.5 | M12×P1.5 | |
| CT-0305 | 8mm | M14×P1.5 | M14×P1.5 | |
| CT-0306 | 10mm | M16×P1.5 | M16×P1.5 | |
| CT-0307 | 12mm | M20×P1.5 | M20×P1.5 | |
| CT-0308 | 15mm | M22×P1.5 | M22×P1.5 | |
| CT-0309 | 4.76mm(3/16") | M10×P1.0 | PT 1/8 | |
| CT-0310 | 4.76mm(3/16") | M10×P1.25 | PT 1/8 | |
| CT-0311 | 6.35mm(1/4") | M12×P1.0 | PT 1/8 | |
| CT-0312 | 6.35mm(1/4") | M12×P1.5 | PT 1/8 | |
| CT-0313 | 8mm | M14×P1.5 | PT 1/8 | |
| CT-0314 | 8mm | M14×P1.5 | PT 1/4 | |
| CT-0315 | 10mm | M16×P1.5 | PT 1/4 | |
| CT-0316 | 12mm | M20×P1.5 | PT 1/4 | |
| CT-0317 | 12mm | M20×P1.5 | PT 3/8 | |
| CT-0318 | 15mm | M22×P1.5 | PT 1/2 | |

Flare Union フレアユニオン



| 品番 | 管のミリ(インチ) | d1 | d2 | 備考 |
|---------|---------------|------------|------------|-------|
| CT-0401 | 4.76mm(3/16") | M10×P1.0 | M10×P1.0 | - |
| CT-0402 | 4.76mm(3/16") | M10×P1.0 | M10×P1.0 | シンチュウ |
| CT-0403 | 4.76mm(3/16") | M10×P1.25 | M10×P1.25 | 受注生産品 |
| CT-0404 | 6.35mm(1/4") | M12×P1.0 | M12×P1.0 | シンチュウ |
| CT-0405 | 6.35mm(1/4") | M12×P1.5 | M12×P1.5 | 受注生産品 |
| CT-0406 | 4.76mm(3/16") | UNF3/8×24 | UNF3/8×24 | シンチュウ |
| CT-0407 | 6.35mm(1/4") | UNF7/16×24 | UNF7/16×24 | 受注生産品 |

ミヤコ自動車工業株式会社

東京 03-3519-2280 札幌 011-853-5555
 東日本 0296-32-6222 大阪 06-6452-2291
 名古屋 052-872-1821

URL : <http://www.miyaco-brake.co.jp>

Copper Tube

銅パイプ



| 品番 | 外径ミリ(インチ) | 厚さ(mm) | 長さ(m) | |
|-----------|-------------|--------|-------|--|
| DP-0476 | 4.76(3/16") | 0.8 | 5m | |
| DP-0500 | 5.00 | 1.0 | 5m | |
| DP-0600 | 6.00 | 1.0 | 5m | |
| DP-0635 | 6.35(1/4") | 1.0 | 5m | |
| DP-0800 | 8.00 | 1.0 | 5m | |
| DP-0952 | 9.52 (3/8") | 1.0 | 5m | |
| DP-1000 | 10.00 | 1.0 | 5m | |
| DP-1200 | 12.00 | 1.0 | 5m | |
| DP-1400 | 14.00 | 1.0 | 5m | |
| DP-1500 | 15.00 | 1.0 | 5m | |
| DP-0476-2 | 4.76(3/16") | 0.8 | 20m | |
| DP-0500-2 | 5.00 | 1.0 | 20m | |
| DP-0600-2 | 6.00 | 1.0 | 20m | |
| DP-0635-2 | 6.35(1/4") | 1.0 | 20m | |
| DP-0800-2 | 8.00 | 1.0 | 20m | |
| DP-0952-2 | 9.52 (3/8") | 1.0 | 20m | |
| DP-1000-2 | 10.00 | 1.0 | 20m | |
| DP-1200-2 | 12.00 | 1.0 | 20m | |
| DP-1400-2 | 14.00 | 1.0 | 20m | |
| DP-1500-2 | 15.00 | 1.0 | 20m | |

Steel Tube

二重巻鋼管



| 品番 | 外径ミリ(インチ) | 厚さ(mm) | 長さ(m) | 表面処理 |
|-----------|-------------|--------|-------|-------------|
| TP-0476 | 4.76(3/16") | 0.7 | 3.7 | 電気亜鉛メッキ |
| TP-0635 | 6.35(1/4") | 0.7 | 3.7 | 電気亜鉛メッキ |
| TP-0800 | 8.00 | 0.7 | 3.7 | 電気亜鉛メッキ |
| TP-1000 | 10.00 | 0.7 | 3.7 | 電気亜鉛メッキ |
| TP-0476-F | 4.76(3/16") | 0.7 | 4.0 | フッ素樹脂コーティング |
| TP-0635-F | 6.35(1/4") | 0.7 | 4.0 | フッ素樹脂コーティング |
| TP-0800-F | 8.00 | 0.7 | 3.7 | フッ素樹脂コーティング |
| TP-1000-F | 10.00 | 0.7 | 3.7 | フッ素樹脂コーティング |